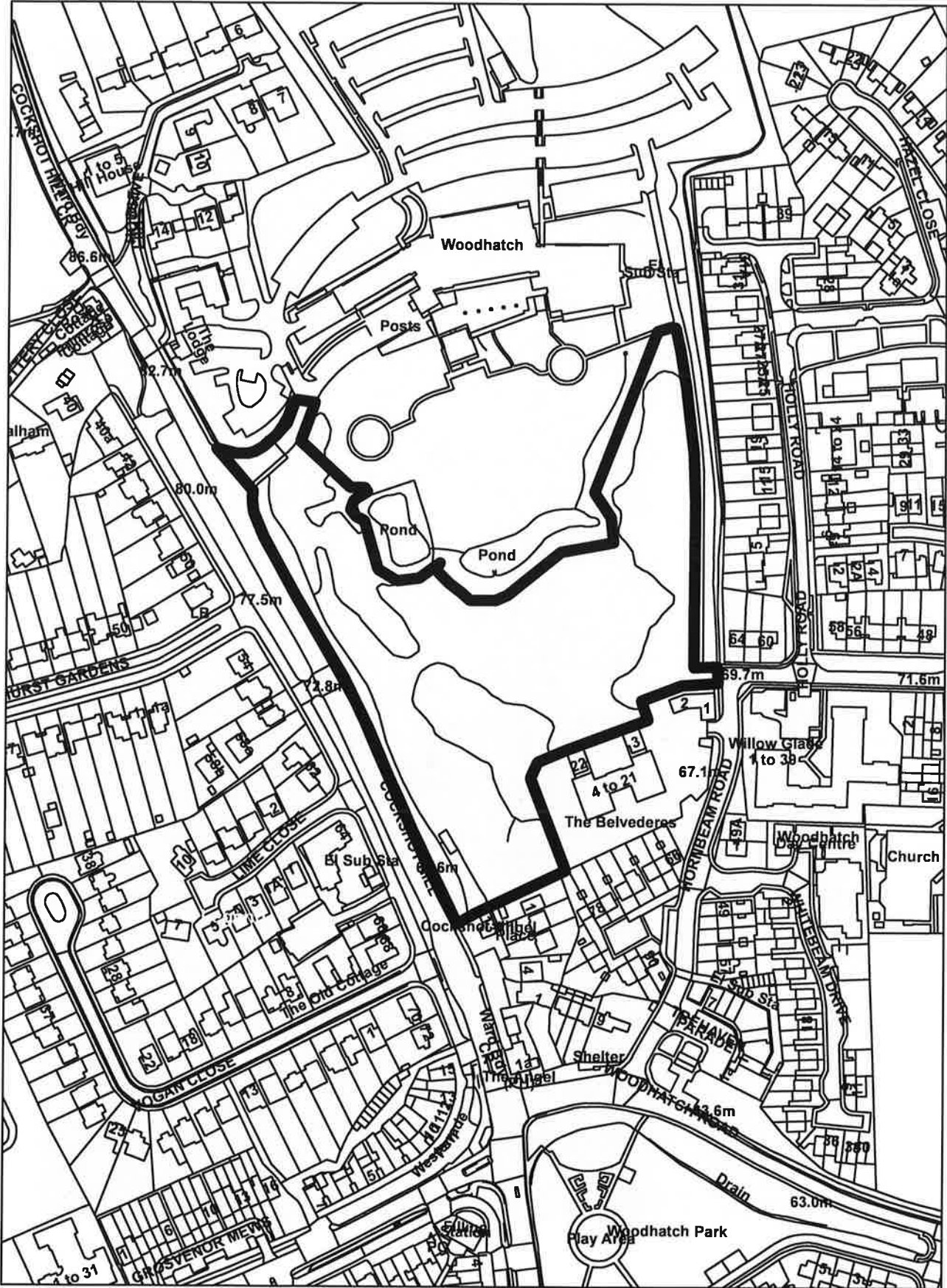


22/01796/CON Land At Woodhatch Place  
11 Cockshot Hill Reigate RH2 8EF

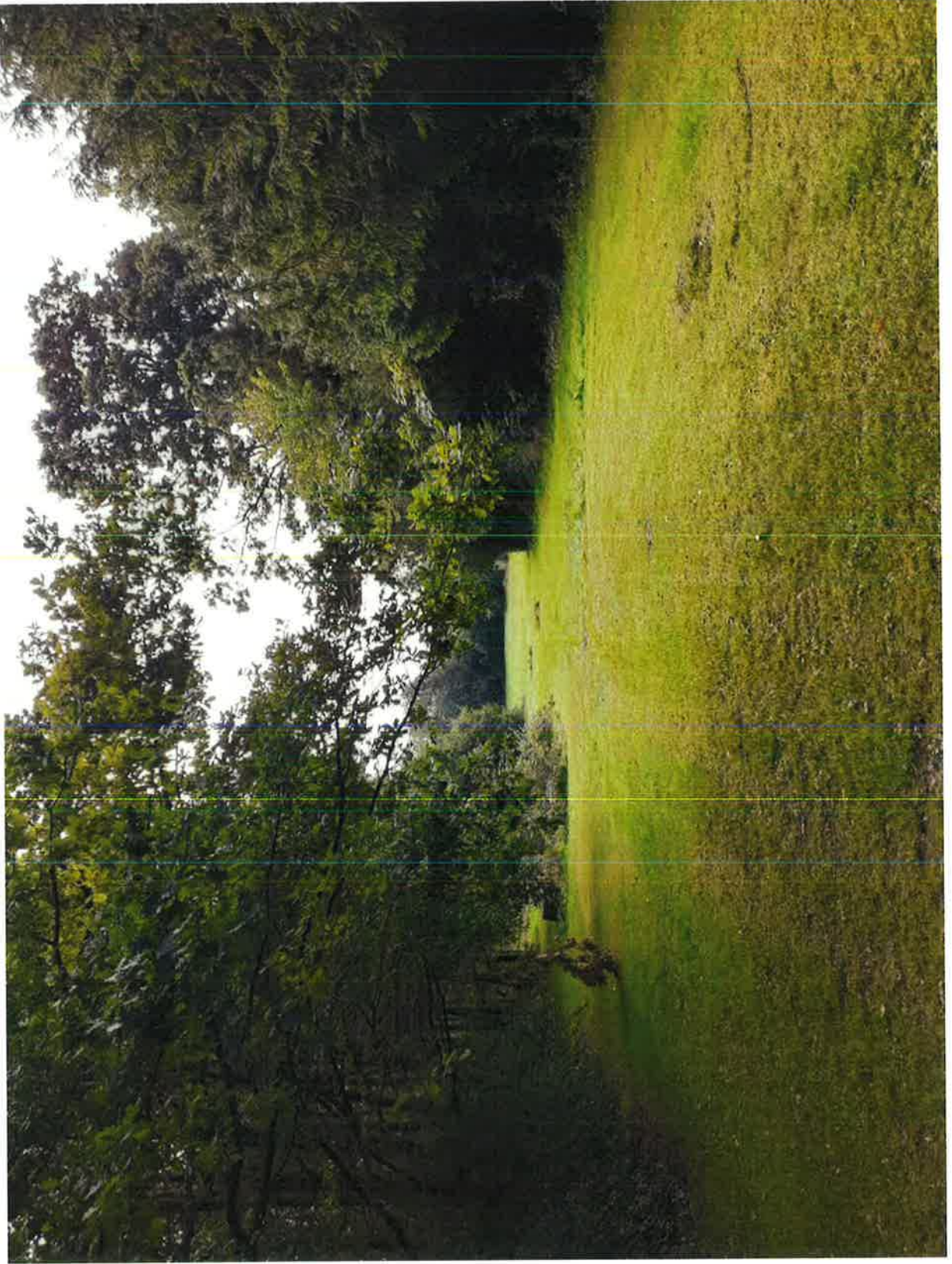




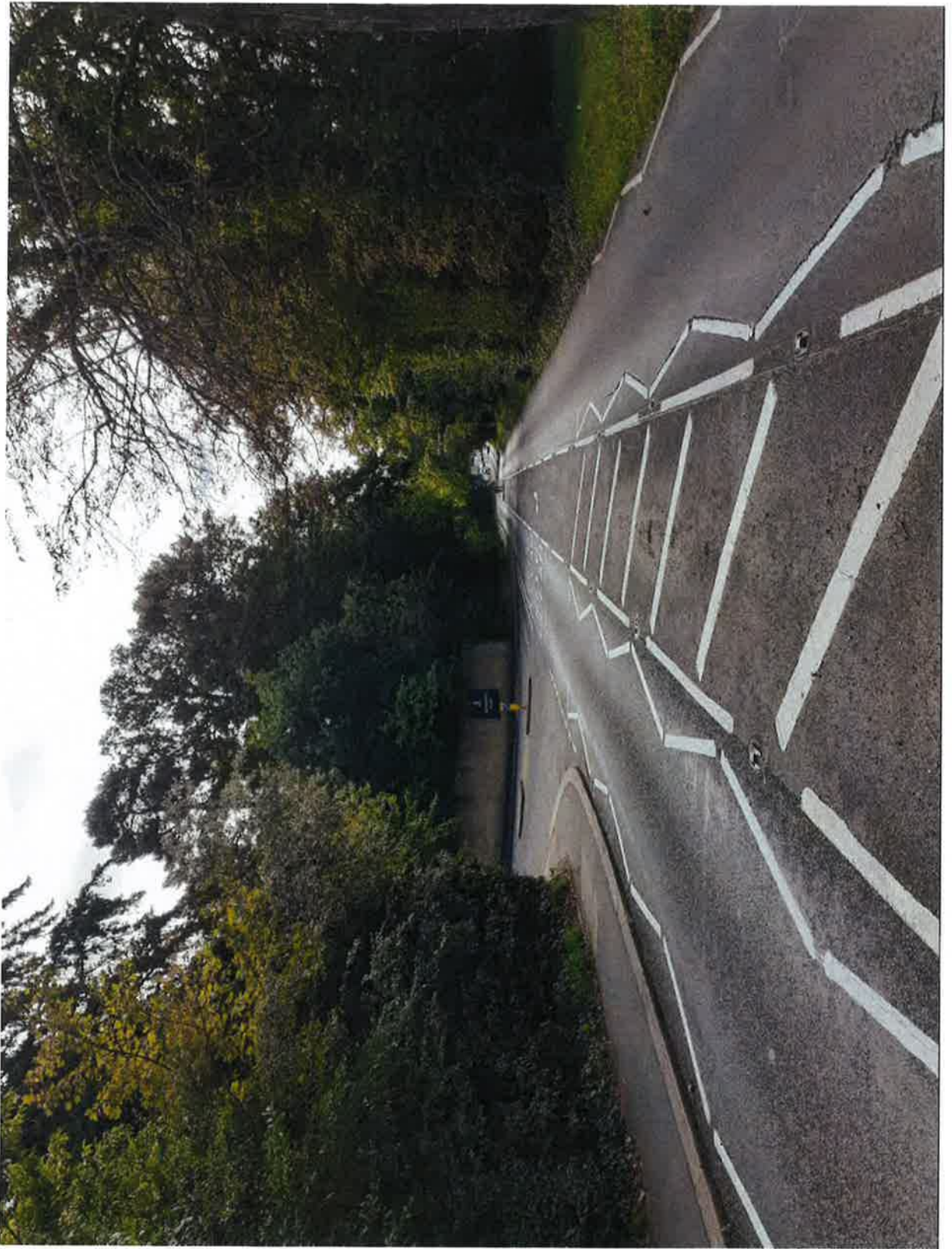




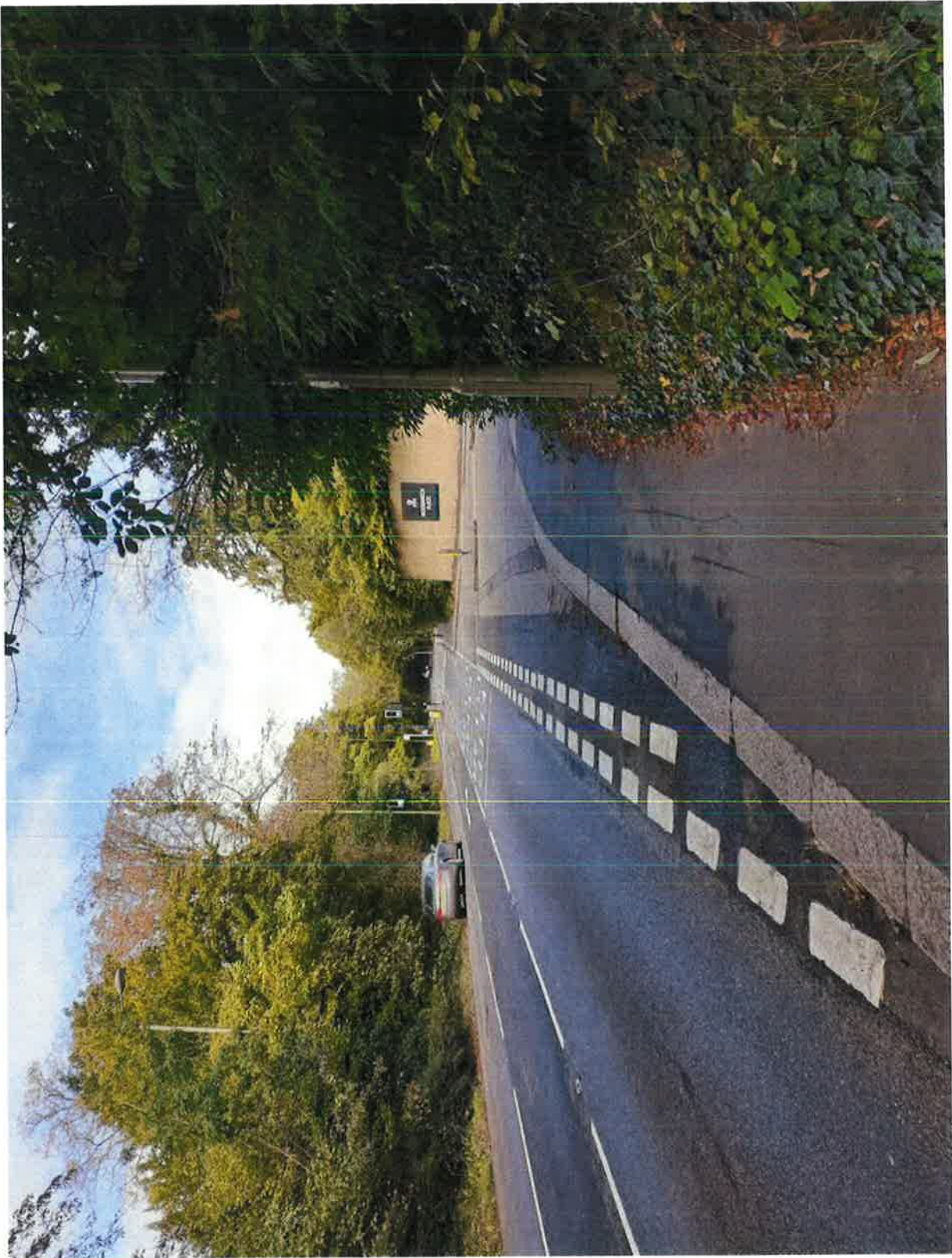
















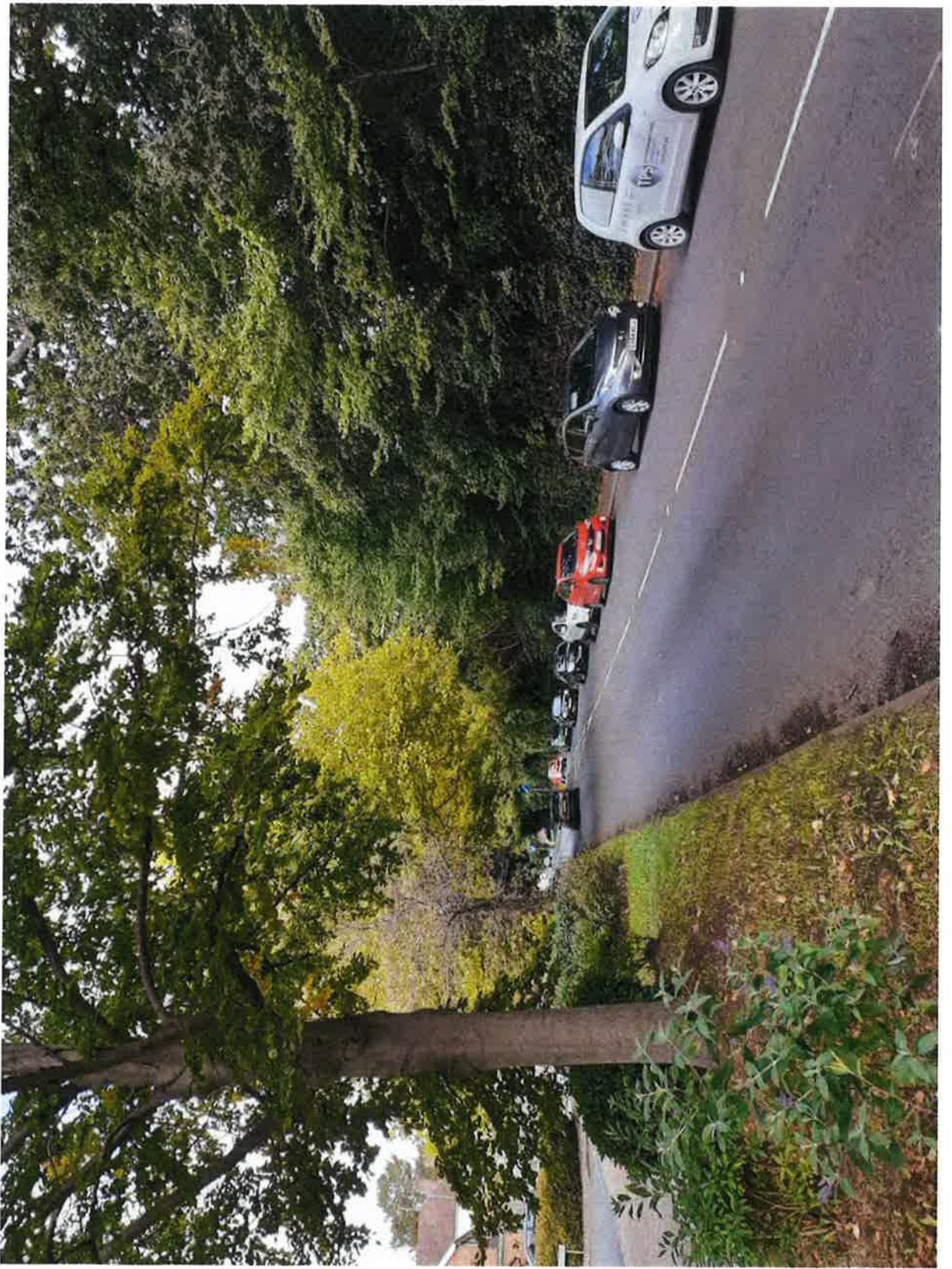
























Scale 1:500  
0 5 10 15 20  
Meters

Rev.	Description	Date	By

Use of any information in this document is limited to the specific project and site. The client is responsible for ensuring that the information is accurate and up-to-date.

# NOVIJUN ARCHITECTS

118822 - NOV - V2 - XX - DR - A - PL14  
11/20/2024

Rogable Ferry Junior School  
118822 - NOV - V2 - XX - DR - A - PL14

Proposed Site Block Plan

Author	Concept	Model	Draw	Issue	Date







1 West Elevation  
1:100



2 South Elevation  
1:100

USE

1. Red Brick
2. Aluminum Siding
3. Aluminum Siding with aluminum louvers and/or spandrel type
4. Aluminum Louver wall
5. Vertical Cedar Slat
6. PVC Aluminum Clapboard
7. Plaster or stucco
8. Concrete Foundation

Date: 11/18/14  
Scale: 1/8" = 1'-0"  
Sheet: 24

NO.	DATE	DESCRIPTION
1	11/18/14	Final Schematic
2	11/18/14	Final Schematic

NOVIUM ARCHITECTS  
11000 Grandview Avenue  
Suite 100  
Detroit, MI 48204  
Tel: 313.963.1100  
Fax: 313.963.1101  
www.noviumarchitects.com

Project Name: Reggie Pryor Junior School  
Project Location: Pleasant Gardens, Detroit, MI  
Project No.: 130802 - NOV - V1 - Z1 - DR - A - PL08  
Drawing No.: 24  
Drawing Title: Planning Submission

NO.	DATE	DESCRIPTION
1	11/18/14	Final Schematic
2	11/18/14	Final Schematic

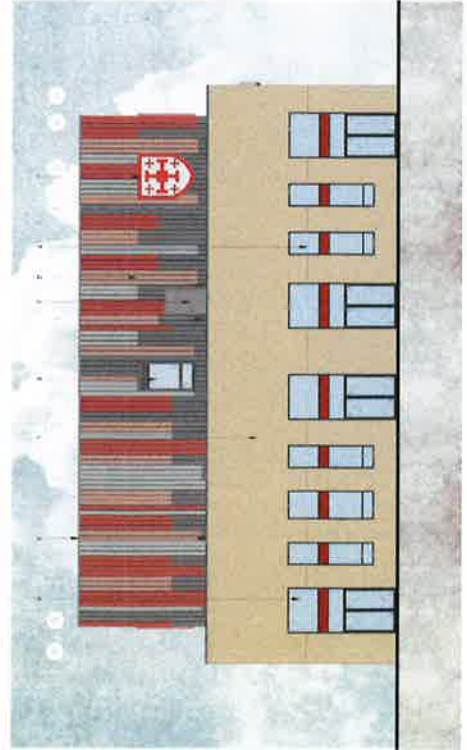


1 2 3

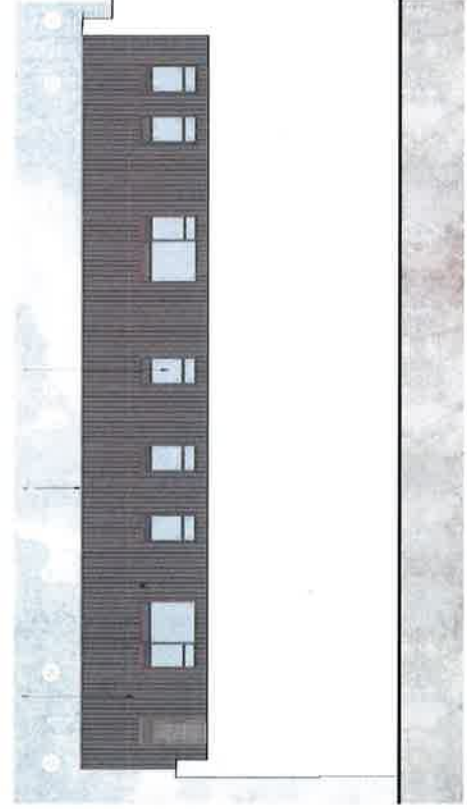


1 East Elevation  
1:100

- Key
- 1 Red Brick
  - 2 Dark Grey Cladding
  - 3 Tan Brickwork
  - 4 Red Brickwork
  - 5 Red Brickwork
  - 6 Red Brickwork
  - 7 Red Brickwork
  - 8 Red Brickwork
  - 9 Red Brickwork
  - 10 Red Brickwork
  - 11 Red Brickwork
  - 12 Red Brickwork
  - 13 Red Brickwork
  - 14 Red Brickwork
  - 15 Red Brickwork
  - 16 Red Brickwork
  - 17 Red Brickwork
  - 18 Red Brickwork
  - 19 Red Brickwork
  - 20 Red Brickwork



2 North Elevation  
1:100



3 Hidden East Elevation  
1:100

Scale 1:500

Area	Area	Area	Area
1	2	3	4
5	6	7	8
9	10	11	12
13	14	15	16
17	18	19	20
21	22	23	24
25	26	27	28
29	30	31	32
33	34	35	36
37	38	39	40
41	42	43	44
45	46	47	48
49	50	51	52
53	54	55	56
57	58	59	60
61	62	63	64
65	66	67	68
69	70	71	72
73	74	75	76
77	78	79	80
81	82	83	84
85	86	87	88
89	90	91	92
93	94	95	96
97	98	99	100

NOVIUM ARCHITECTS

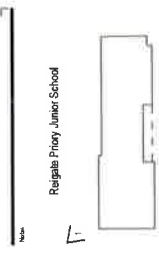
1118822 - NOV - Y1 - Z - DR - A - PL09  
 For information  
 Planning Submission  
 20066



1 - Visualization of the building from the all weather pitches



2 - Visualisation of the building from woodlands



Regisb Primary Junior School

Rev	Description	Date	Author	Checked By
1	Issue for Information	11/01/2024	NOYIUN ARCHITECTS	
2	Issue for Planning Submission	11/01/2024	NOYIUN ARCHITECTS	

Use Speed Drawings with All Details and Dimensions in 1:100 or 1:150. The drawing is to be used in conjunction with all other drawings and specifications. It is not to be used for construction purposes.

# NOYIUN ARCHITECTS

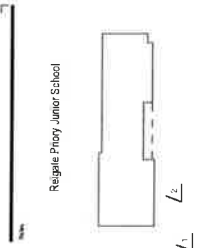
2nd Floor, Colindale Avenue, Colindale, London, NW9 1NS  
 Tel: 020 8850 7474  
 Fax: 020 8850 7475  
 Email: info@noyiun.com

Project Name: Regisb Primary Junior School  
 Project Location: Regisb, London, NW9 1NS  
 Project Reference: 1138822 - NDY - V1 - XX - VS - A - PL16

Project Status: For Information  
 Project Date: 11/01/2024  
 Project Reference: 1138822 - NDY - V1 - XX - VS - A - PL16

Rev	Description	Date	Author	Checked By
1	Issue for Information	11/01/2024	NOYIUN ARCHITECTS	
2	Issue for Planning Submission	11/01/2024	NOYIUN ARCHITECTS	





Item No.	Description	Unit	Quantity	Rate	Total
1	Professional Fee				
2	Site Visit				
3	Site Preparation				
4	Site Work				
5	Site Clean-up				
6	Site Security				
7	Site Maintenance				
8	Site Restoration				
9	Site Decommissioning				
10	Site Remediation				
11	Site Investigation				
12	Site Assessment				
13	Site Monitoring				
14	Site Reporting				
15	Site Closure				

Use of this information is subject to the terms and conditions of the contract documents and the contract documents shall govern.

# NOVIUM ARCHITECTS

1138832 - NOV - VI - XIX - VS - A - PL15

For Information

Reigate Priory Junior School

Designation: External

Item No.	Description	Unit	Quantity	Rate	Total
1	Professional Fee				
2	Site Visit				
3	Site Preparation				
4	Site Work				
5	Site Clean-up				
6	Site Security				
7	Site Maintenance				
8	Site Restoration				
9	Site Decommissioning				
10	Site Remediation				
11	Site Investigation				
12	Site Assessment				
13	Site Monitoring				
14	Site Reporting				
15	Site Closure				

1138832 - NOV - VI - XIX - VS - A - PL15

For Information

Reigate Priory Junior School

Designation: External

Project: Planning Submission

20666





**rbmp**

**VP01 - Baseline View**

Camera make & model: \* Nikon D600 (full frame s/s) s/r  
 Lens make & focal length: \* Nikon 50mm F1.8  
 Date & time of photograph: \* 13/07/22 @ 13:06pm  
 OS grid reference: \* 52382075E, W6710 36N

Viewpoint height (AOD): \* +83.23m AOD  
 Distance from site: \* +100m  
 Projection: \* Planim  
 Enlargement / Sheet Size: \* 100% @ A3

Visualisation Type: \* Type 4  
 Horizontal Field of View: \* 35.6°  
 Height of camera (AGL): \* 1.6m  
 Page size / Image size (mm): \* 420 x 297 / 390 x 260

TO BE VIEWED AT A COMFORTABLE ARMS LENGTH





**rbmp**

Camera make & model  
- Nikon D600 (full frame sensor)  
Lens make & focal length  
- Nikon 50mm f/1.8  
Date & time of photograph  
- 13/01/22 @ 13:05:00  
OS grid reference  
- 52582075E, 4971036N

Viewpoint height (AOD)  
- 83.83m AOD  
Distance from site  
- 100m  
Projection  
- Planar  
Enlargement / Sheet Size  
- 100% @ A3

Visualisation Type  
- Type 4  
Horizontal Field of View  
- 39.6°  
Height of camera (AGL)  
- 1.6m  
Page size / Image size (mm)  
- 420 x 297 / 390 x 260

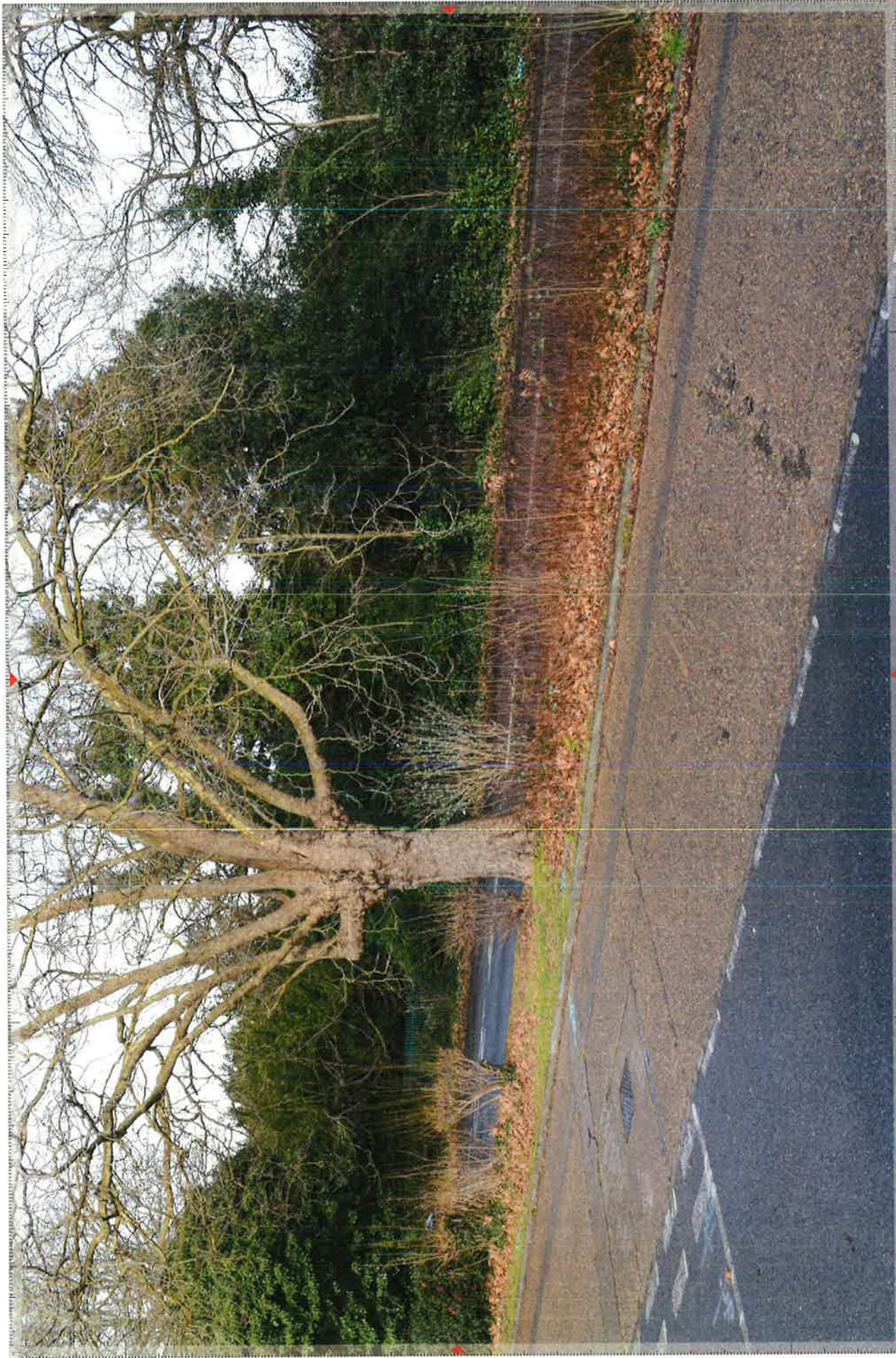
**VP01 - Verified View**

rbmp.2159 Rubijgate School 128822-JBU-XX-XX-RP-L-0001, Verified Views

page 16 of 181

TO BE VIEWED AT A COMFORTABLE ARM'S LENGTH





**VP04 - Baseline View**

rmp-2159 Belgate School 138822-JBU-XX-XX-RP-L-8001, Verified Views

- Type 4  
 - 65.5'  
 - 1.6m  
 - 420 x 297 / 350 x 260

**Visualisation Type**  
 - Horizontal Field of View  
 - Height of camera (AGL)  
 - Page size / Image size (mm)

**Viewpoint height (AOD)**  
 - Distance from site  
 - Projection  
 - Enlargement / Sheet Size

**Camera make & model**  
 - Lens make & focal length  
 - Date & time of photograph  
 - OS grid reference

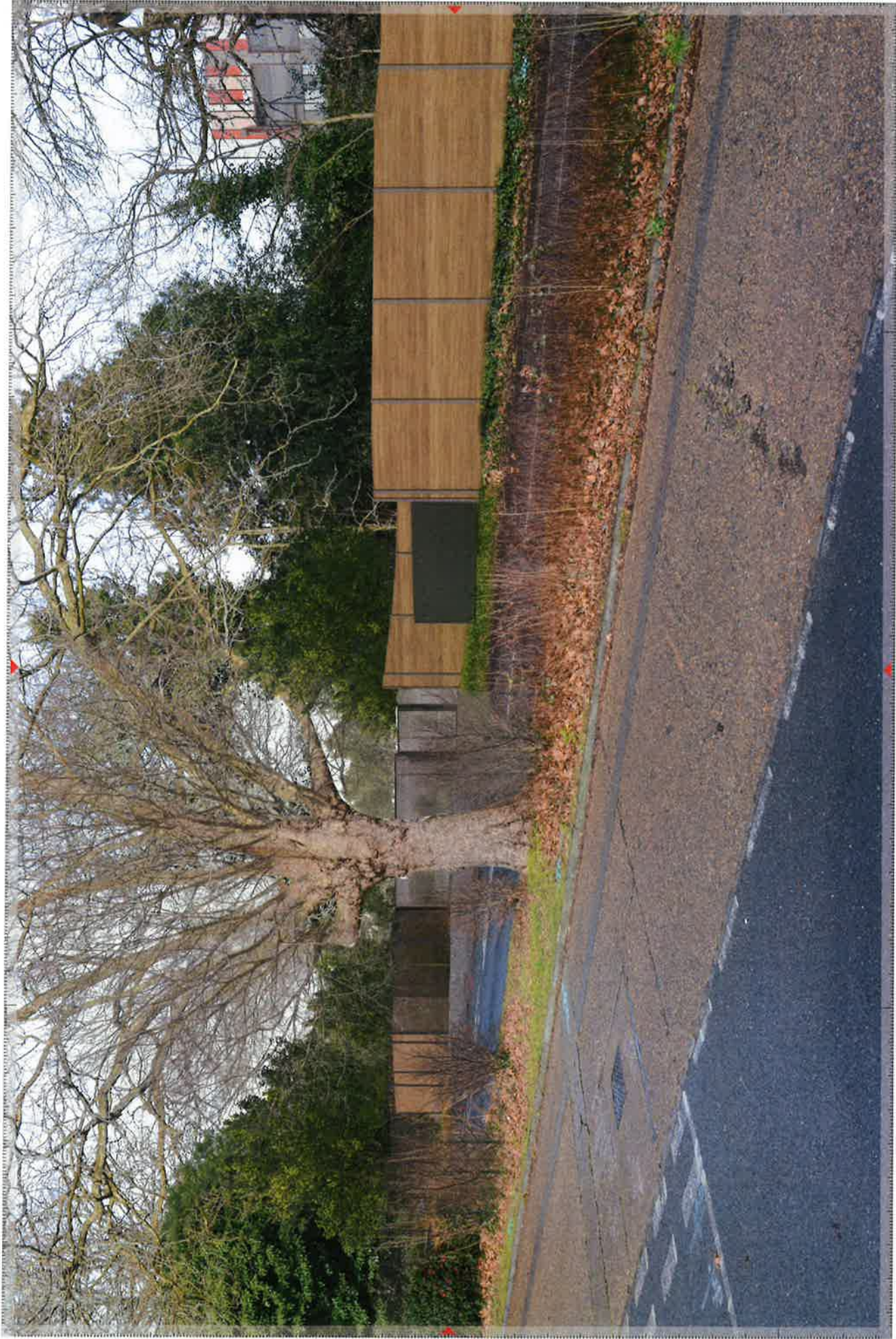
- 65.72m AOD  
 - 20m  
 - Planar  
 - 100% @ A3

- Nikon D600 (full frame SLR)  
 - Nikon 28mm f/1.8  
 - 13/01/22, 09:13:44pm  
 - 525763 31E, 148902.39N

**rbmp**

TO BE VIEWED AT A COMFORTABLE ARMS LENGTH





**rbmp**

Camera make & model  
 Lens make & focal length  
 Date & time of photograph  
 OS grid reference

- Nikon D600 (full frame sensor)  
 - Nikon 28mm f/1.8  
 - 13/07/22 at 13:40pm  
 - 525763 31E, 48902.39N

Viewpoint height (AOD)  
 Distance from site  
 Projection  
 Enlargement / Sheet Size

- +6372m AOD  
 - 20m  
 - Flat  
 - 100% at A3

Visualisation Type  
 Horizontal Field of View  
 Height of camera (AOL)  
 Page size / Image size (mm)

- Type 4  
 - 65.5°  
 - 1.6m  
 - 420 x 297 / 390 x 260

**VP04 - Verified View**

rbmp\_2159 Reigate School 133822-UBU-XX-XX-RP-L-6001, Verified View





**rbmp**

Camera make & model  
 Lens make & focal length  
 Date & time of photograph  
 OS grid reference

- Nikon D600 (full frame s35orf)  
 - Nikon 28mm f/1.8  
 - 13/01/22 at 14:19:10  
 - 522759.25E, 14882102N

Viewpoint height (AOD)  
 Distance from site  
 Projection  
 Enlargement / Street Size

+66.24m AOD  
 -30m  
 -P10x01  
 -100% @ A3

Visualisation Type  
 Horizontal Field of View  
 Height of camera (ABL)  
 Page size / Image size (mm)

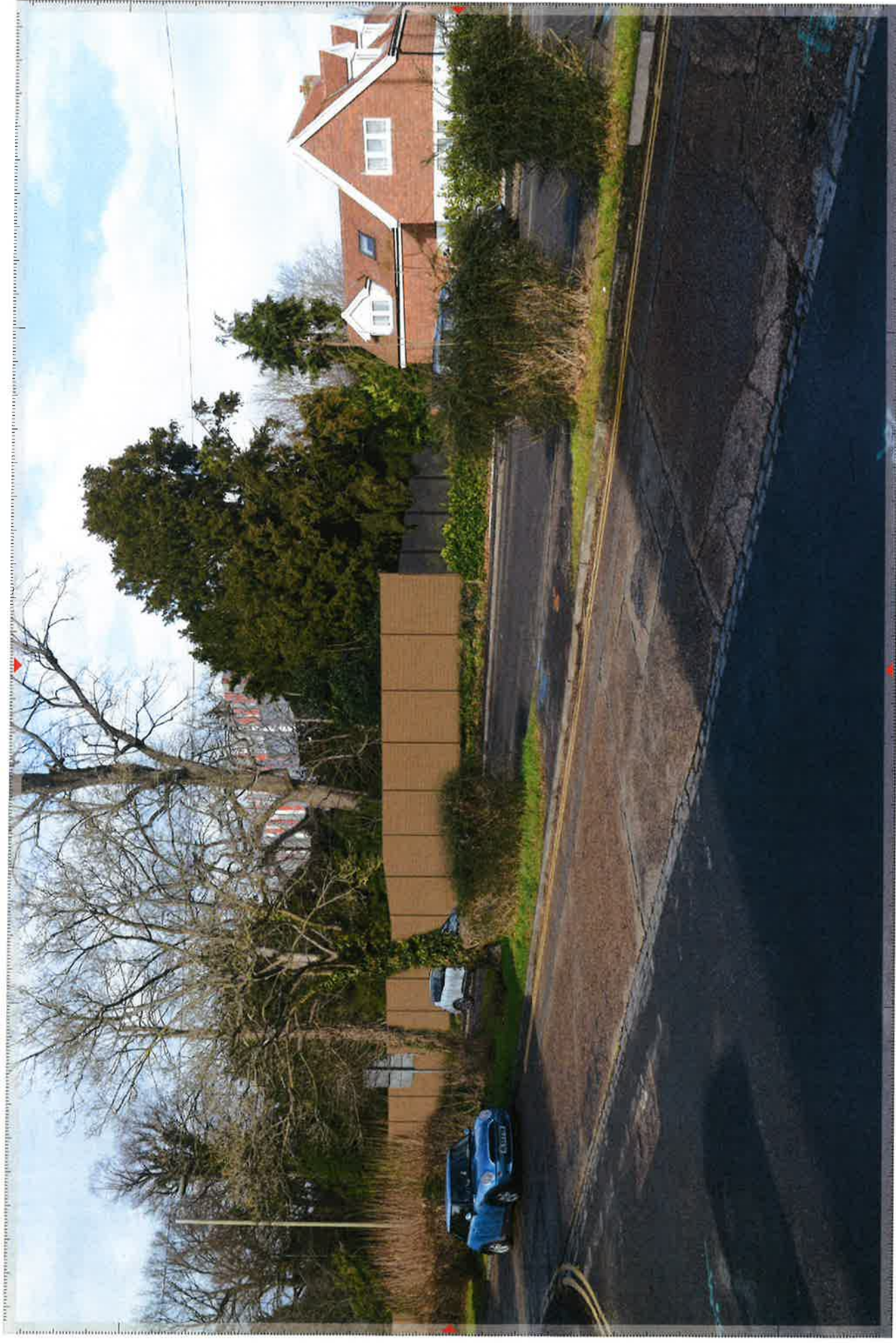
- Type 4  
 - 65.5°  
 - 1.6m  
 - 420 x 297 / 350 x 250

**VP05 - Baseline View**

rbmp-2159 Reigate School 11338223-UBU-XXX-XX-RP-L-8001, Verified Views  
 page: 18 of 18

TO BE VIEWED AT A COMFORTABLE ARMS LENGTH





**rbmp**

Camera make & model  
Lens make & focal length  
Date & time of photograph  
OS grid reference

- Nikon D600 (full frame series)  
- Nikon 28mm f/1.8  
- 13/01/22 @ 14:43:00  
- 52579925E 4882102N

Viewpoint height (AOD)  
Distance from site  
Projection  
Enlargement / Sheet Size

- 1.66 24m AOD  
- 30m  
- Planar  
- 100% @ A3

Visualisation Type  
Horizontal Field of View  
Height of camera (AGL)  
Page size / Image size (mm)

- Type 4  
- 65.5°  
- 1.6m  
- 420 x 297 / 590 x 260

**VP05 - Verified View**  
rbmp-2159 Reigate School 1338823-UJU-XX-XX-RP-L-0001, Verified Views

TO BE VIEWED AT A COMFORTABLE ARM'S LENGTH





Camera make & model  
 Lens make & focal length  
 Date & time of photograph  
 OS grid reference

- Nikon D600 (full frame sensor)  
 - Nikon 28mm f/1.8  
 - 13/01/22 @ 15:05pm  
 - 525830 38E, 148770 72N

Viewpoint height (AOD)  
 Distance from site  
 Projection  
 Enlargement / Sheet Size

+65.32m AOD  
 -65m  
 -Planar  
 -100% @ A3

Visualisation Type  
 Horizontal Field of View  
 Height of camera (AGL)  
 Page size / Image size (mm)

- Type 4  
 - 65.5°  
 - 1.6m  
 - 420 x 297 / 350 x 260





**rbmp**

Camera make & model  
 Lens make & focal length  
 Date & time of photograph  
 OS grid reference

- Nikon D600 (full frame sensor)  
 - Nikon 28mm f/1.8  
 - 13/01/22 at 15:05pm  
 - 525830 35E, 148770 72N

Viewpoint height (AOD)  
 Distance from site  
 Projection  
 Enlargement / Sheet Size

+65.32m AOD  
 -65m  
 -Plate  
 -100% @ A3

Visualisation Type  
 Horizontal Field of View  
 Height of camera (AGL)  
 Page size / Image size (mm)

- Type 4  
 - 65.5°  
 - 1.6m  
 - 420 x 297 / 300 x 260

**VP06 - Verified View**

rbmp 2159 Raigate School 1128222-JBU-XXX-PP-L-8007, Verified Views

TO BE VIEWED AT A COMFORTABLE ARMS LENGTH





**rbmp**

Camera make & model  
Lens make & focal length  
Date & time of photograph  
OS grid reference

- Nikon D500 (full frame, crop)  
- Nikkor 28mm f1.8  
- 13/01/22 at 15:20:00  
- 52588128E 148716.69N

Viewpoint height (AOD)  
Distance from site  
Projection  
Enlargement / Sheet Size

- 163.66m AOD  
- 150m  
- Planar  
- 100% of A3

Visualisation Type  
Horizontal Field of View  
Height of camera (AGL)  
Page size / Image size (mm)

\* Type: 4  
\* 65.5°  
\* 1.61m  
\* 420 x 237 / 390 x 260

**VP07 - Baseline View**

rbmp\_2159 Reggate School 1138822-1JBU-XX-XX-RP-L-4001, Verified Views

TO BE VIEWED AT A COMFORTABLE ARM'S LENGTH





**rbmp**

Camera make & model  
Lens make & focal length  
Date & time of photograph  
OS grid reference

- Nikon D600 (full frame s.r.s.r)  
- Nikon 28mm f/1.8  
- 13/01/22 @ 15:20pm  
- 525883 25E, 148715 69N

Viewpoint height (AOD)  
Distance from site  
Projection  
Enlargement / Sheet Size

- +63.65m AOD  
- 150m  
- Planar  
- 100% @ A3

Visualisation Type  
Horizontal Field of View  
Height of camera (AGL)  
Page size / Image size (mm)

- Type 4  
- 65.5°  
- 1.6m  
- 420 x 297 / 390 x 260

**VP07 - Verified View**  
rbmp-2159 Paigete School 1318822-JBU-300-RP-L-0001, Verified Views





**rbmp**

Camera make & model  
 Lens make & focal length  
 Date & time of photograph  
 OS grid reference

- Nikon D600 (full frame sensor)  
 - Nikon 28mm f/1.8  
 - 13/07/22 at 15:47pm  
 - 529552.06E, 48940.33N

Viewpoint height (AOD)  
 Distance from site  
 Projection  
 Enlargement / Sheet Size

- 48.6m AOD  
 - 45m  
 - Planar  
 - 100% @ A3

Visualisation Type  
 Horizontal Field of View  
 Height of camera (AGL)  
 Page size / Image size (mm)

- Type 4  
 - 65.5°  
 - 16m  
 - 420 x 297 / 390 x 260

**VP10 - Baseline View**

TO BE VIEWED AT A COMFORTABLE ARMS LENGTH





rbmp

Camera make & model  
Lens make & focal length  
Date & time of photograph  
OS grid reference

- Nikon D600 (full frame sensor)  
- Nikon 28mm f/1.8  
- 13/01/22 @ 15:47:00  
- 525952.06E, 488940.33N

Viewpoint height (AOD)  
Distance from site  
Projection  
Enlargement / Sheet Size

+ 68.6m AOD  
- 45m  
- Planar  
- 100% @ A3

Visualisation Type  
Horizontal Field of View  
Height of camera (AGL)  
Page size / Image size (mm)

- Type 4  
- 65.5°  
- 16m  
- 420 x 297 / 390 x 260

VP10 - Verified View  
rbmp-2159 Baligne School 1138822-JBU-XS-XL-PP-L-600A, Verified Views  
page 15 of 181

TO BE VIEWED AT A COMFORTABLE ARMS LENGTH





**VP-LPA - Baseline View**

Visualisation Type  
Horizontal Field of View  
Height of camera (AGL)  
Page size / Image size (mm)

Viewpoint Height (AOD)  
Distance from site  
Projection  
Enlargement / Sheet Size

Camera make & model  
Lens make & focal length  
Date & time of photograph  
OS grid reference

**rbmp**





**VP-LPA - Verified View**

rbmp.2159 Reigate School T138822-UBU-XX-PP-L-8001, Verified Views

Visualisation Type  
 Horizontal Field of View  
 Height of camera (ACL)  
 Page size / Image size (mm)

Viewpoint height (AOD)  
 Distance from site  
 Projection  
 Enlargement / Sheet Size

Camera make & model  
 Lens make & focal length  
 Date & time of photograph  
 OS grid reference

rbmp

TO BE VIEWED AT A COMPACTABLE A4 SIZE LENGTH



